

1120 | HAMILTON STREET MAIN FLOOR VANCOUVER, BC



partnership.
performance.

PRIME RETAIL SPACE FOR LEASE

Matt Walker

Principal

D 604.647.5074

E matt.walker@avisonyoung.com

Lenia Calico

Corporate Real Estate Advisor

D 604.647.5071

E lenia.calico@avisonyoung.com

**AVISON
YOUNG**

Intelligent
Real Estate Solutions

1120

HAMILTON STREET MAIN FLOOR VANCOUVER, BC

LOCATION & BUILDING

1120 Hamilton Street is located between Davie and Helmcken Streets in the heart of Yaletown and one-half block from the Yaletown-Roundhouse Canada Line SkyTrain Station. Built in 1918 this four storey heritage building underwent an architecturally designed renovation of the exterior and lobby area in 1996. The lobby accommodates retail shops providing convenient amenities for tenants.

FOR LEASE

Prime Yaletown retail premises fronting Hamilton Street and accessible from both Hamilton and Mainland Streets.

AREA AVAILABLE

956 sf

OPERATING COSTS

\$13.00 (2011)

NET RENT

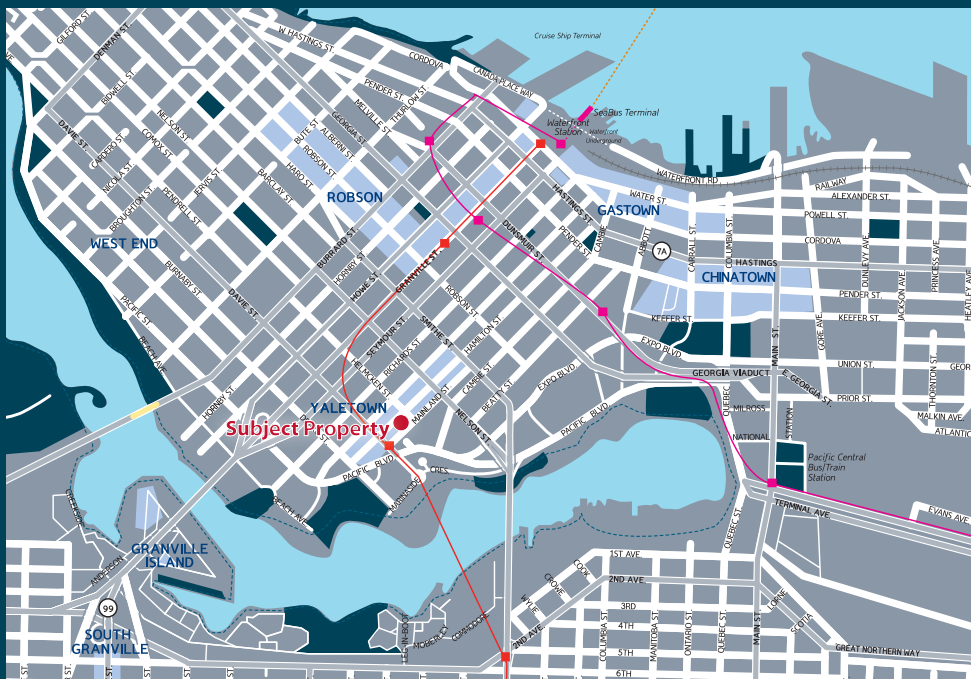
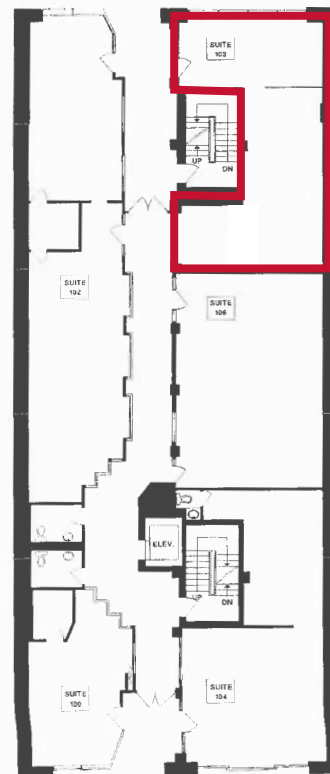
Negotiable

AVAILABILITY

Immediate

TERM

Negotiable



Matt Walker
Principal
D 604.647.5074
E matt.walker@avisonyoung.com

Lenia Calico
Corporate Real Estate Advisor
D 604.647.5071
E lenia.calico@avisonyoung.com

Suite 2100, 1055 West Georgia Street
PO Box 11109 Royal Centre, Vancouver, BC, Canada V6E 3P3
P 604.687.7331 W avisonyoung.com

E. & O.E.: The information contained herein was obtained from sources which we deem reliable and, while thought to be correct, is not guaranteed by Avison Young Commercial Real Estate (B.C.) Inc. — 2011

